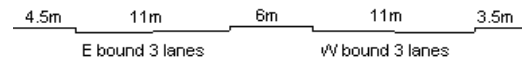


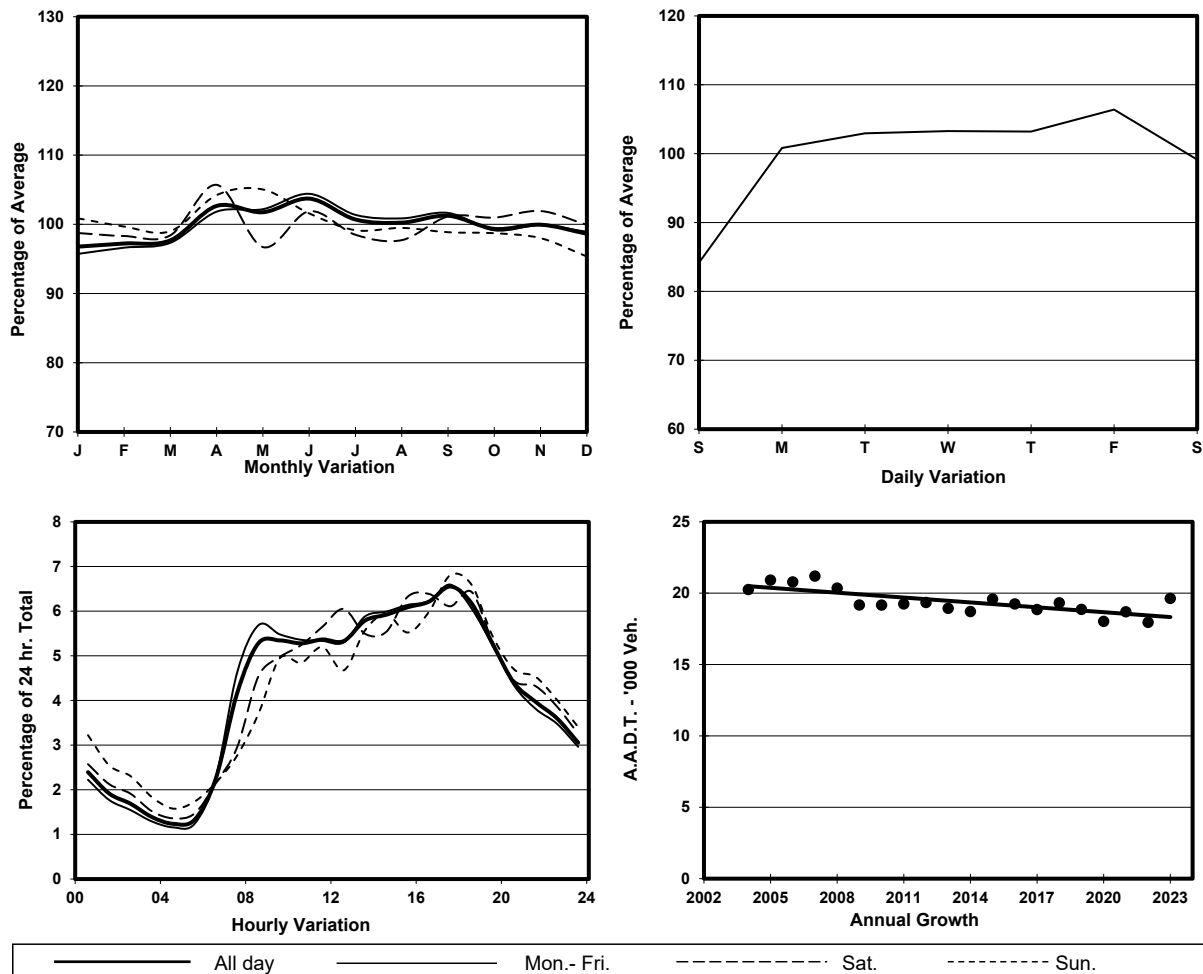
YEAR

2023

LINK TONKIN ST (from CHEUNG SHA WAN RD to UN CHAU ST)

CORE STATION  
ROAD NETWORK  
ROAD TYPE3017  
MAJOR  
DISTRICT DISTRIBUTOR

## 1. TRAFFIC FLOW VARIATION AND GROWTH



## 2. TRAFFIC CHARACTERISTICS (BY DIRECTION)

Parameter	All - Day	Mon. - Fri.	Sat.	Sun.
<b>EAST BOUND</b>				
A.A.D.T.	10410	10780	10360	9280
R 12 / 24 - %	66.5	67.5	65	62.3
R 16 / 24 - %	83.7	84.4	82.8	80.8
AM Peak Hour	0900-1000	0900-1000	0900-1000	0900-1000
One-way flow at AM peak hour	550	570	550	540
T - % (AM)	-	-	-	-
PM Peak Hour	1700-1800	1700-1800	1800-1900	1700-1800
One-way flow at PM peak hour	680	720	680	640
T - % (PM)	-	-	-	-
Prop.of commercial vehicles - 16 hr.	-	-	-	-
<b>WEST BOUND</b>				
A.A.D.T.	9220	9690	9260	7420
R 12 / 24 - %	68.7	70	66.5	62.8
R 16 / 24 - %	85.9	86.9	84.6	81.7
AM Peak Hour	0800-0900	0800-0900	0800-0900	0900-1000
One-way flow at AM peak hour	520	600	440	290
T - % (AM)	-	-	-	-
PM Peak Hour	1700-1800	1700-1800	1700-1800	1700-1800
One-way flow at PM peak hour	600	630	620	500
T - % (PM)	-	-	-	-
Prop.of commercial vehicles - 16 hr.	-	-	-	-

## 3. OTHER INFORMATION AND COMMENT